



GOUTHAMI

INSTITUTE OF TECHNOLOGY AND MANAGEMENT FOR WOMEN

Approved by AICTE New Delhi ,

Affiliated to JNTU Anantapur & SBTET, Vijayawada

Sai Nagar, Peddasetty Palli (V), Proddatur, Y.S.R Kodapa(Dist), A.P-516360 Cell :9491431101

E-mail : Principal.Bu@jntua.ac.in gtmw@gitamw.ac.in

Website : gitamw.ac.in

BARRIER FREE ENVIRONMENT

Ramps/Slopes with Handrails

- Non-slippery ramps at building entrances and within the campus.
- Continuous handrails at appropriate heights on both sides.

Lifts/Elevators with Accessibility Features

- Lifts are essential for people who use wheelchairs or other mobility aids.
- At GITAMW, our Lift can carry 4 members other heavy material between Ground Floor to Third floor.

Accessible Washrooms

- Separate washrooms for PwD with grab bars, wide doors, and sufficient manoeuvring space.
- Lower washbasins and non-slip floors.

Wheelchair Accessibility

- Accessible pathways with smooth surfaces across campus.
- Wheelchairs available for use.



M. G. Srinivas
PRINCIPAL
Gouthami Institute of Technology and
Management for Women,
Peddasetty Palli (V),
Proddatur-516360, Kadapa (Dt.)



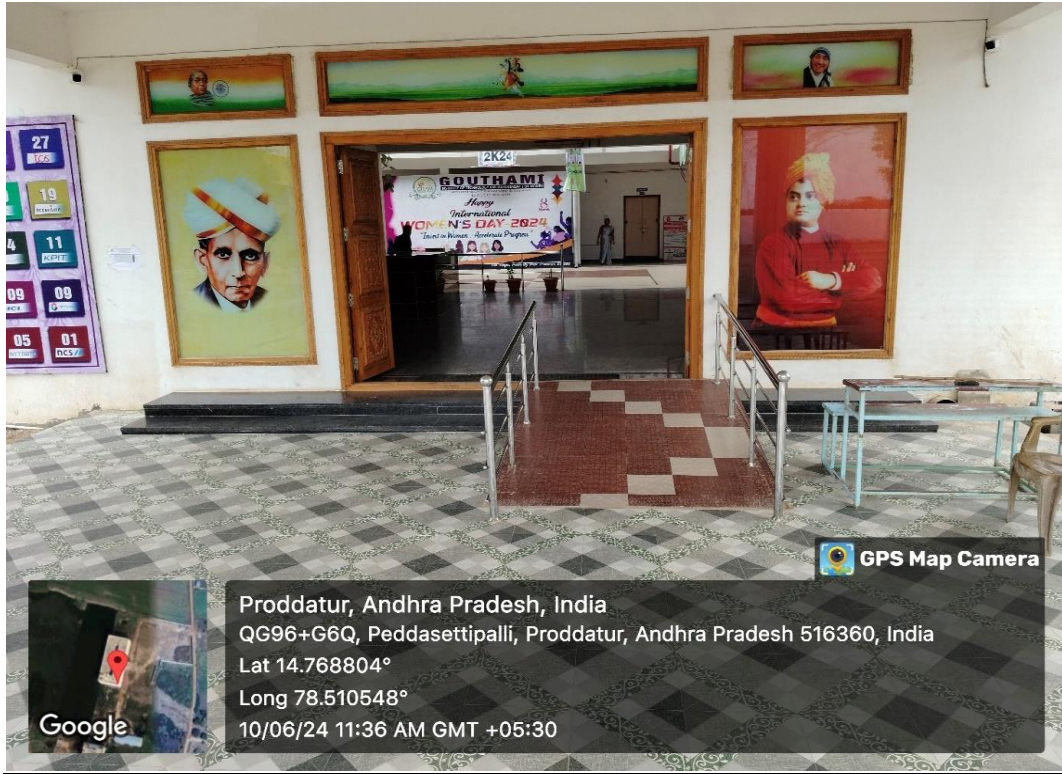
GOUTHAMI

INSTITUTE OF TECHNOLOGY AND MANAGEMENT FOR WOMEN

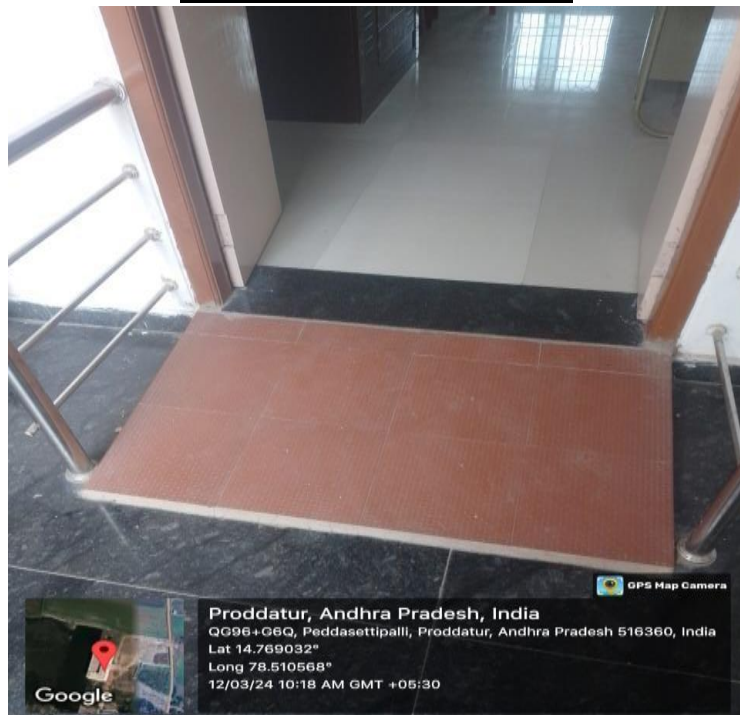
Approved by AICTE New Delhi,
Affiliated to JNTU Anantapur & SBTET, Vijayawada

Sai Nagar, Peddasetty Palli (VI), Proddatur, Y.S.R Kadapa(Dist), A.P-516360 Cell :9491431101
E-mail : Principal.Bu@jntua.ac.in gtmw@gitamw.ac.in Website : gitamw.ac.in

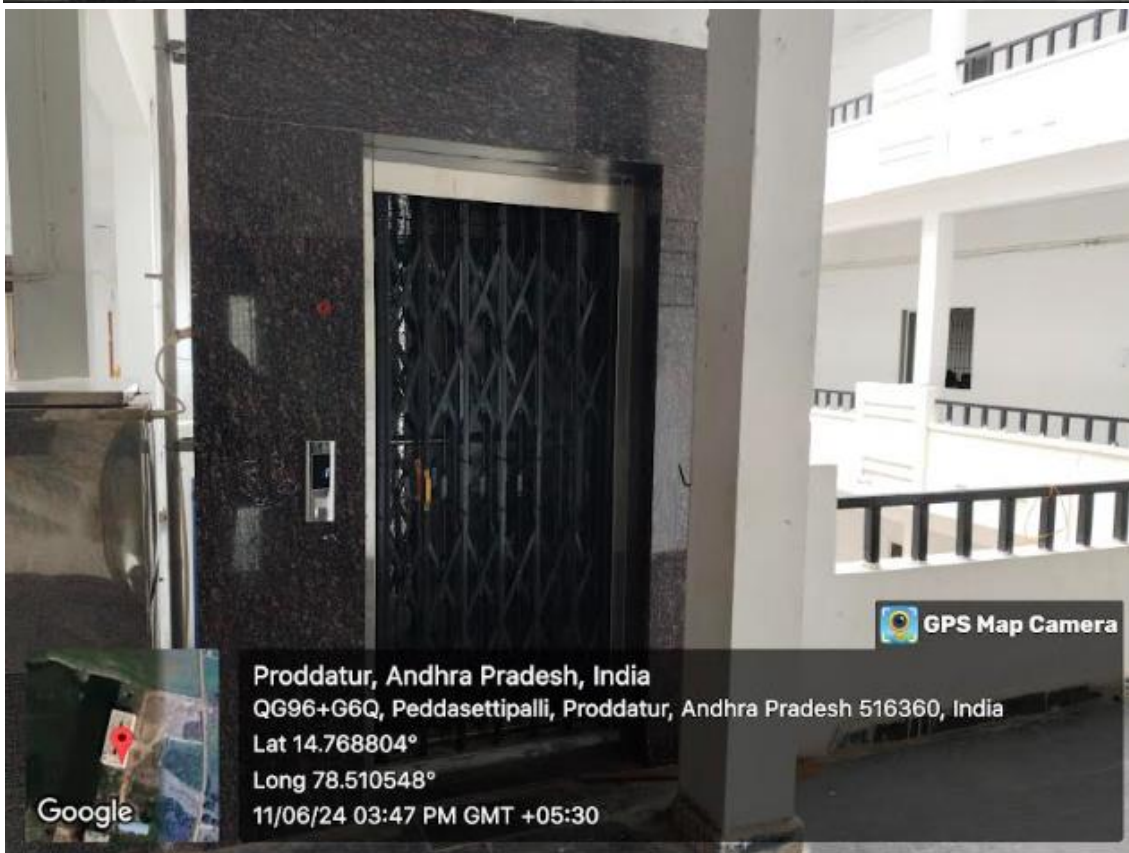
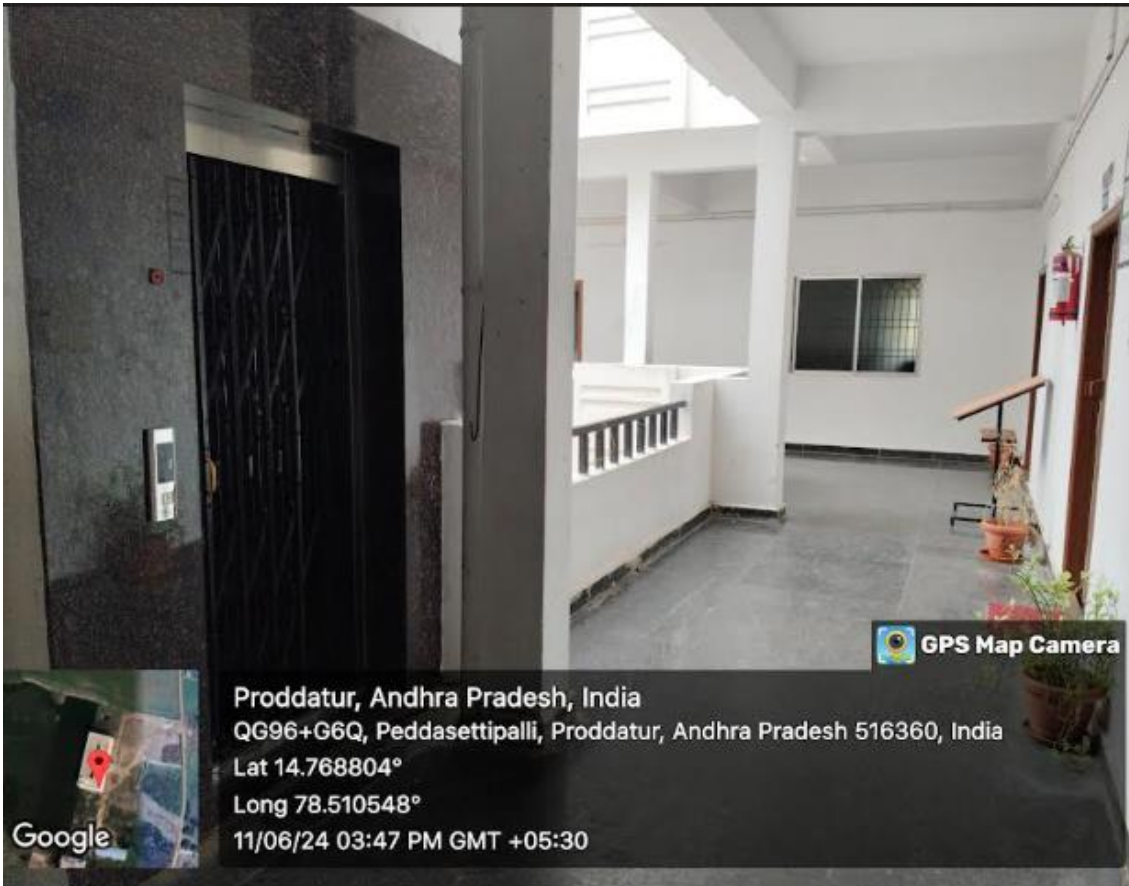
RAMP WAY AT THE MAIN ENTRANCE

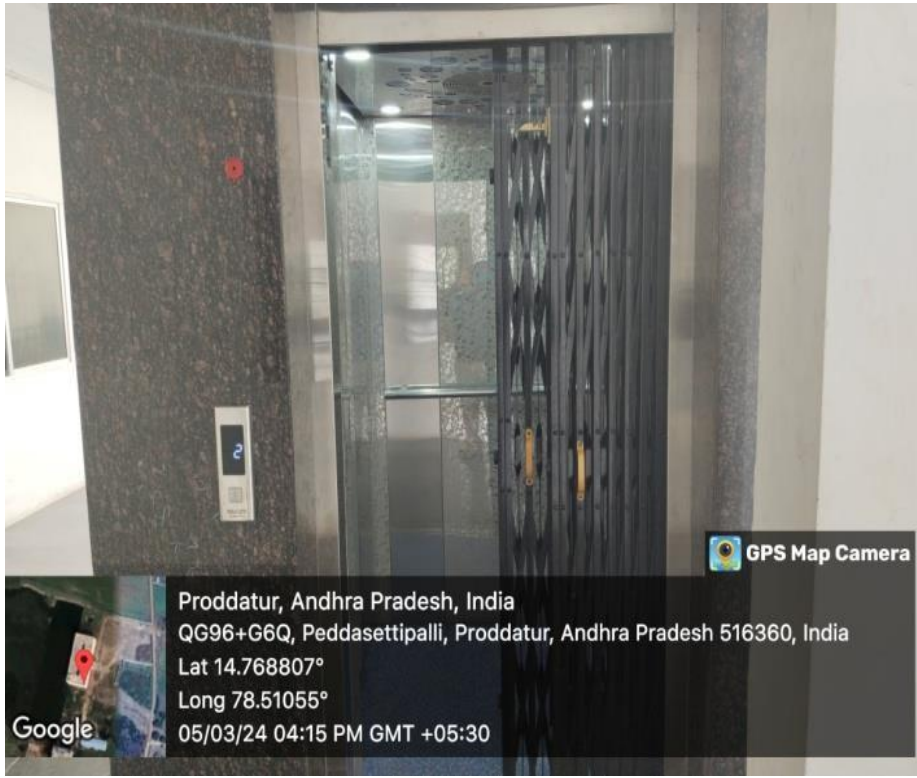


RAMP TO WASH ROOM



LIFT FACILITY





WASHROOM FOR DESABLE PEOPE



WHEEL CHAIR



M. Suresh
PRINCIPAL
Gouthami Institute of Technology and
Management for Women,
Peddasettipalli (V),
Proddatur-516360, Kadapa (Dt.)

P. PAPA RAO

M.TECH (STRUCTURES), F.I.V.C. ENG (I)
CHARTERED ENGINEER

Ph : 23321044
(M) : 9246150854

Regd. Valuer - Income Tax Dept. Wealth Tax, Estate Duty Regd No. Cat-1/282/96-97
Panel Valuer - State Bank of India, Andhra Bank, Canara Bank, Indian Bank
CanFin Homes Ltd, UTI Bank, LIC of India, Indian Oil Corporation Ltd.
Bharath Petroleum Hindustan Petroleum Corporation, Income Tax, Wealth Tax, Estate Duty
Licensed Engineer - Surveyor, Loss Assessor, Insurance SLA No. 31151
G.H.M.C. License No. : 2009 / STRL ENGG / TPIO / G.H.M.C



Arjun

CONSULTANTS

Engineers, Architects, Valuers & Interior Designers

Ref No. AC/SES/3862/2012

Date :-29-12-2012

**CERTIFICATE OF AVAILABILITY OF BARRIOR FREE ENVIRONMENT, TOILETS
CREATE FOR PHYSICALLY CHALLENGED AND ALL WEATHER APPROCH
ROADS**

This is to certify that **GOUTHAMI INSTITUTE OF TECHNOLOGY AND MANAGEMENT FOR WOMEN** Sponsored by Mother Teresa Christian Minority Educational Society, in Sy.Nos. 482/1, 483 & 484, Situated at Peddasettypalli Village & Grampanchayat, Proddatur Mandal, Kadapa District, A.P., Pin-516360. Provided the facility for the Physically Challenged and elderly persons to move about safety and freely with environment to support the independent formation of the Individuals. Above all facilities will be approached easily to all weather approach roads. As per the guidelines and space standards by CPWD/ National Building Code Norms & standards, Ministry of urban affairs & employment, India.

This certificate has been issued after physical inspection of the college campus done by us.

C. Sita Ratnam
SITA RATNAM GAGGARA
B. ARCH
CA/2007/41387